

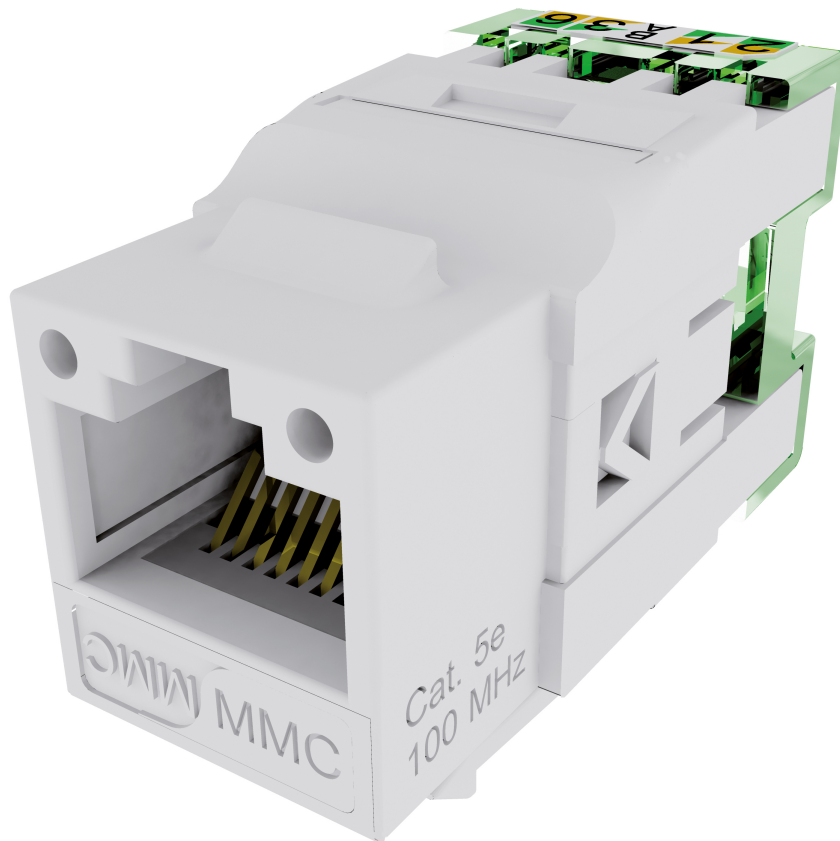
BC5ENB8

Cat5e unshielded RJ45 connector - BC  
range - Bag of 8



## DESCRIPTION

The BC5ENB CAT5E UTP connector provides a connection using a BCTOOL proprietary tool or via mechanical insertion with the aid of a punch down type tool. Its keystone format adapts to all common faceplates and boxes. Its transmission performances ensure a speed of 1Gbit/s while minimizing the number of errors.



## ADVANTAGES

- Exceeds the requirements of standard Cat5e
- Quick connection
- Keystone format



**CONSTRUCTION & TECHNICAL PERFORMANCE**

Product Type	BC5ENBxy
Color	Light Grey RAL 7035
Connector Format	Keystone
Core Material	Corps ABS
Dimensions (W x D x h)	19,3 x 16,10 x 33.5 mm
Shielding	Unshielded
Coding Type	Colour code 568 A et B
Max Compatible Conductor Diameter (mm)	120
Inserter Type	Peigne de câblage
Cover Material	PC UL94V0
CAD Nature	Bronze + platine / Cu + SnPb 80μ
Contact Nature	Bronze, Platine Ni + revêtement Or
Grounding	N/A
Compatible Cable Type	Rigide
Cable Entry Type	axiale
Compatible Gauge Type	AWG24 à AWG23
Max Compatible Cable Diameter (mm)	850

**ELECTRICAL CHARACTERISTICS**

Service Voltage (V)	> 1000 Vdc contact à contact
Admissible power	? 10 W
Contact resistance	? 20 m? IEC 60512-2-1 Test 2a
Operating voltage	< 72 Vdc

**TRANSMISSION CHARACTERISTICS**

Performance Category	Category 5E
Data Transmission Standard	EIA/TIA 568-B.2-1 Category 5e, EN 50173-1: 2011 Classe D, ISO / IEC 11801 Ed2 Class D

**MECHANICAL CHARACTERISTICS**

Insertion Cycle	> 1000
-----------------	--------

**ENVIRONMENTAL CHARACTERISTIC**

RoHS Compliance	Conforme RoHS
Operating Temperature	-40°C +70°C
Component Standard	IEC 60603-7-2 Cat5E non blindé

## ADDITIONAL INFORMATION

System Warranty	25 years
Product Packaging	Box
Weight (Kg)	0.078