

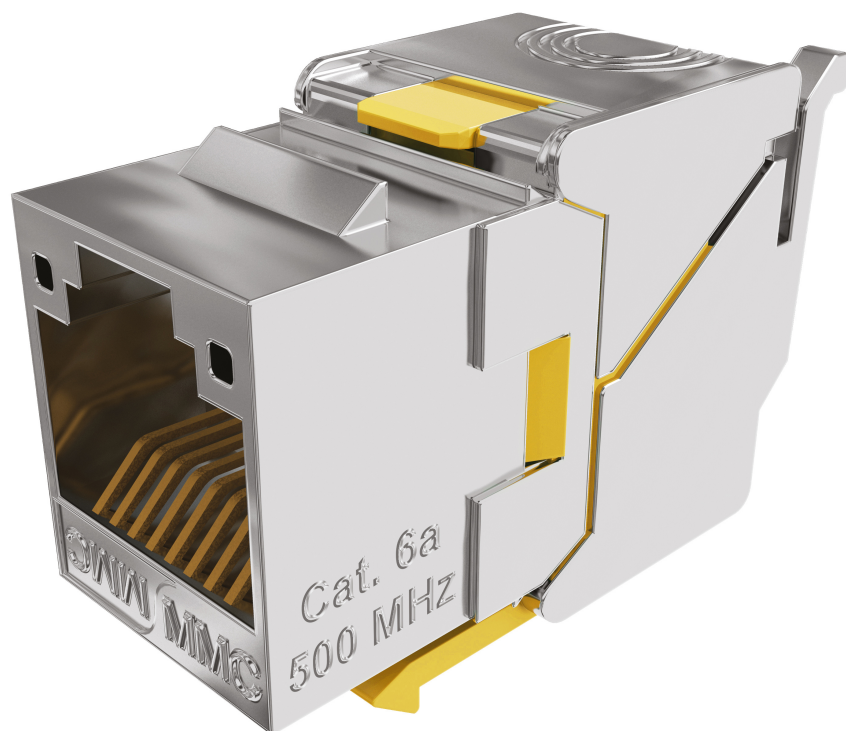
BC6AFSTLBW8

**CAT6A 360° shielded RJ45 connector for  
AWG22 cables - Box of 8**



## DESCRIPTION

BC6AFSTLBW is a CAT6A toolless 360° shielded RJ45 connector, intended for AWG22 cables. Its performances comply with cabling standards.



## ADVANTAGES

- Optimized for connection with AWG22 conductors
- Cat6a component-certified connector
- 25 year warranty
- 4PPoE IEC 60512-99-002 certified
- Keystone format
- Compact connector



Updated: 1/02/2026

This document is confidential and is the property of ADALTRA. ADALTRA holds the copyright, and the document must not be copied or modified in any form, in whole or in part, without the prior written permission of ADALTRA. The specifications contained in this document are non-contractual and may be subject to change without prior notice.

**CONSTRUCTION & TECHNICAL PERFORMANCE**

Product Type	BC6AFSTLBWxx
Color	Metal
Connector Format	Keystone
Core Material	Zamak shielded body
Dimensions (W x D x h)	21,91 x 16 x 28,25 mm
Shielding	Full Shielded
Coding Type	Colour code 568 A et B
Max Compatible Conductor Diameter (mm)	145
Inserter Type	Wiring comb
Cover Material	Zamak
CAD Nature	Bronze + Platinum / Cu + SnPb 80µ
Contact Nature	Bronze, Nickel Platinum and Gold 1.2 µm
Grounding	360°
Compatible Cable Type	Rigid
Cable Entry Type	axiale
Compatible Gauge Type	AWG24 to AWG22
Max Compatible Cable Diameter (mm)	850

**ELECTRICAL CHARACTERISTICS**

Service Voltage (V)	> 1000 Vdc contact à contact
Admissible power	90 W
Contact resistance	< 20 mΩ IEC 60512-2-1 Test 2a
Operating voltage	< 72 Vdc
PoE type	IEC 802.3bt (4PPoE)
Electronic Compensation	Optimized PCB circuit

**TRANSMISSION CHARACTERISTICS**

Performance Category	Category 6A
Data Transmission Standard	EN 50173-1: 2011 Classe Ea, ISO 11801 ED3, TIA 568.2-D CAT6A

**MECHANICAL CHARACTERISTICS**

Insertion Cycle	> 1000
Locking Type	Two back caps linked to the connector body providing simplified locking of the connector

**ADDITIONAL INFORMATION**

System Warranty	25 years
Product Packaging	Box
Weight (Kg)	0.1