

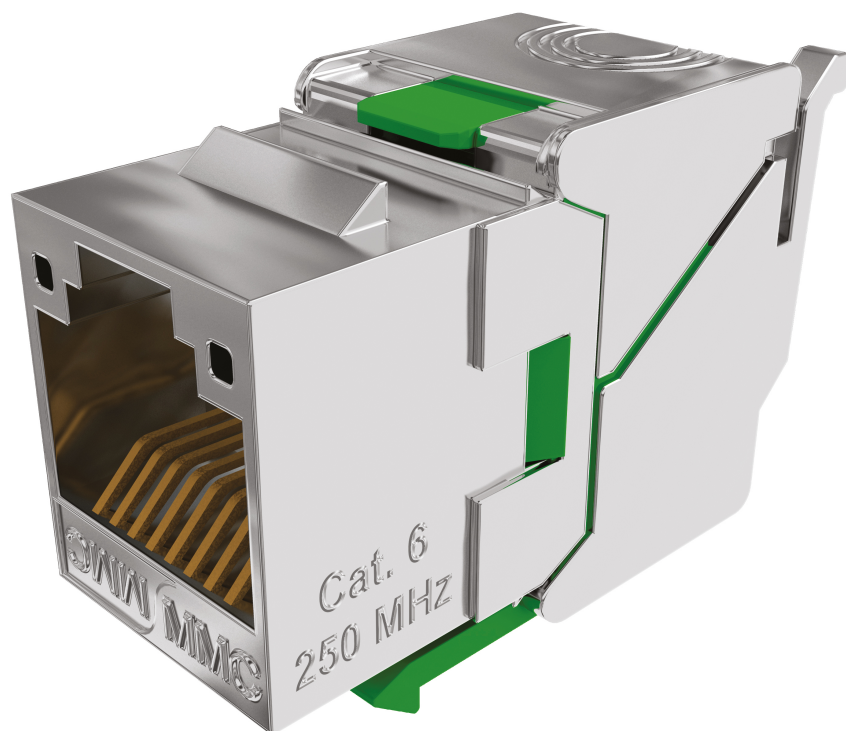
BC6FSTL50

Cat6 toolless 360° shielded RJ45
connector - BC range - Box of 50



DESCRIPTION

Cat.6 toolless 360° shielded RJ45 connector from the BC range having a compact design with a shallow depth ensuring proper management of the bend radius.



ADVANTAGES

- Cat 6 component-certified connector
- 25 year warranty
- Keystone format
- Compact connector



Updated: 1/02/2026

This document is confidential and is the property of ADALTRA. ADALTRA holds the copyright, and the document must not be copied or modified in any form, in whole or in part, without the prior written permission of ADALTRA. The specifications contained in this document are non-contractual and may be subject to change without prior notice.

CONSTRUCTION & TECHNICAL PERFORMANCE

Product Type	BC6FSTLxxy
Color	Metal
Connector Format	Keystone
Core Material	Zamak shielded body
Dimensions (W x D x h)	21,91 x 16 x 28,25 mm
Shielding	Full Shielded
Coding Type	Colour code 568 A et B
Max Compatible Conductor Diameter (mm)	130
Inserter Type	Wiring comb
Cover Material	Zamak
CAD Nature	Bronze + Platinum / Cu + SnPb 80μ
Contact Nature	Bronze, Nickel Platinum and Gold 1.2 μm
Grounding	360°
Compatible Cable Type	Rigid and flexible
Cable Entry Type	Axial
Compatible Gauge Type	AWG26 to AWG23
Max Compatible Cable Diameter (mm)	850

ELECTRICAL CHARACTERISTICS

Service Voltage (V)	> 1000 Vdc contact à contact
Admissible power	? 30 W
Contact resistance	< 20 m? IEC 60512-2-1 Test 2a
Operating voltage	< 72 Vdc
PoE type	IEC 802.3at (PoEP)
Electronic Compensation	Optimized PCB Circuit

TRANSMISSION CHARACTERISTICS

Performance Category	Category 6
Data Transmission Standard	EIA/TIA 568-C.2 Cat6, EN 50173-1: 2011 Classe E, ISO / IEC 11801 Ed2 Class E

MECHANICAL CHARACTERISTICS

Insertion Cycle	> 1000
Locking Type	Two back caps linked to the connector body providing simplified locking of the connector

ADDITIONAL INFORMATION

System Warranty	25 years
Product Packaging	Box
Weight (Kg)	0.022