

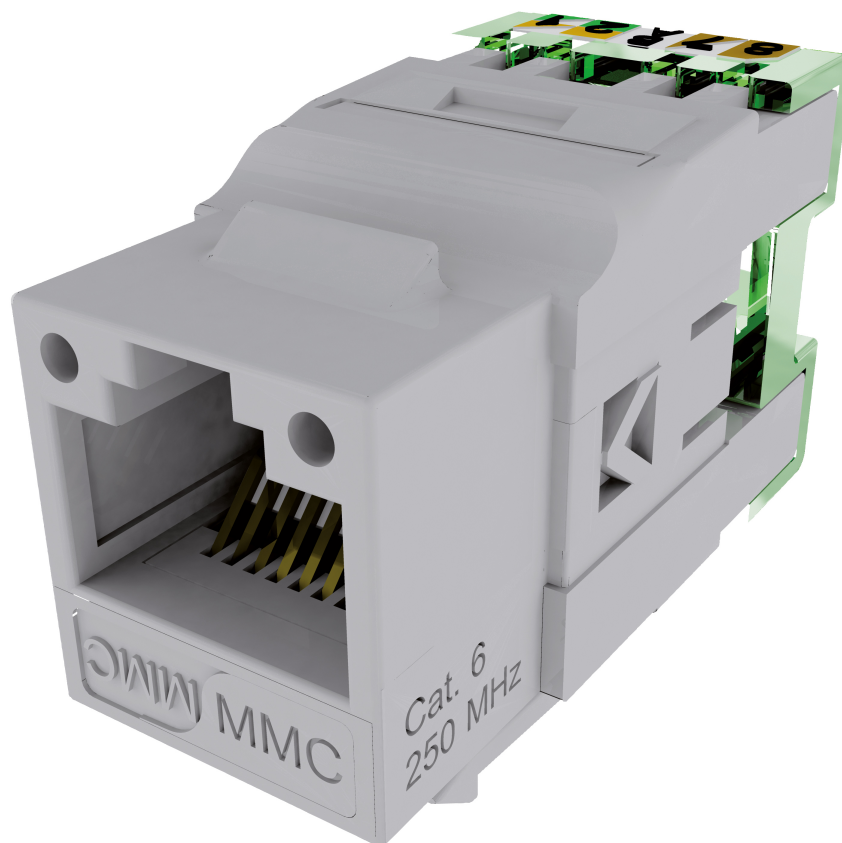
BC6NB

Cat6 unshielded RJ45 connector - BC range - Box of 50



## DESCRIPTION

The CAT6 BC6NB unshielded connector provides termination via the proprietary BCTOOL or by mechanical insertion using a punch-down tool. Its keystone format allows it to fit most faceplates and enclosures on the market. Its transmission performance supports speeds up to 5 Gbit/s.



## ADVANTAGES

- Exceeds the requirements of standard Cat6
- Keystone format



**CONSTRUCTION & TECHNICAL PERFORMANCE**

Product Type	BC6NBxy
Color	Light Grey RAL 7035
Connector Format	Keystone
Core Material	ABS body
Dimensions (W x D x h)	19,3 x 16,10 x 33.5 mm
Shielding	Unshielded
Coding Type	Colour code 568 A et B
Max Compatible Conductor Diameter (mm)	130
Inserter Type	Wiring comb
Cover Material	PC UL94V0
CAD Nature	Bronze + Platinum / Cu + SnPb 80μ
Contact Nature	Bronze, Nickel Platinum + Gold plating
Grounding	No
Compatible Cable Type	Rigid and flexible
Cable Entry Type	Axial
Compatible Gauge Type	AWG26 to AWG22
Max Compatible Cable Diameter (mm)	850

**ELECTRICAL CHARACTERISTICS**

Service Voltage (V)	> 1000 Vdc contact à contact
Admissible power	? 15,4 W
Contact resistance	? 20 m? IEC 60512-2-1 Test 2a
Operating voltage	< 72 Vdc
PoE type	IEC 802.3af (PoE)
Electronic Compensation	Optimized PCB circuit

**TRANSMISSION CHARACTERISTICS**

Performance Category	Category 6
Data Transmission Standard	EIA/TIA 568-C.2 Cat6, EN 50173-1: 2011 Classe E, ISO / IEC 11801 Ed2 Class E

**MECHANICAL CHARACTERISTICS**

Insertion Cycle	> 1000
-----------------	--------

**ENVIRONMENTAL CHARACTERISTIC**

Independent lab certification	Yes
IP rating	IP20

**ENVIRONMENTAL CHARACTERISTIC**

RoHS Compliance	RoHS compliant
Operating Temperature	-40°C +70°C
Component Standard	IEC 60603-7-4

**ADDITIONAL INFORMATION**

System Warranty	25 years
Product Packaging	Box
Weight (Kg)	0.01

## Additional Information

