

BCPAN2U

2U 48 RJ45 keystone port 19" patch panel

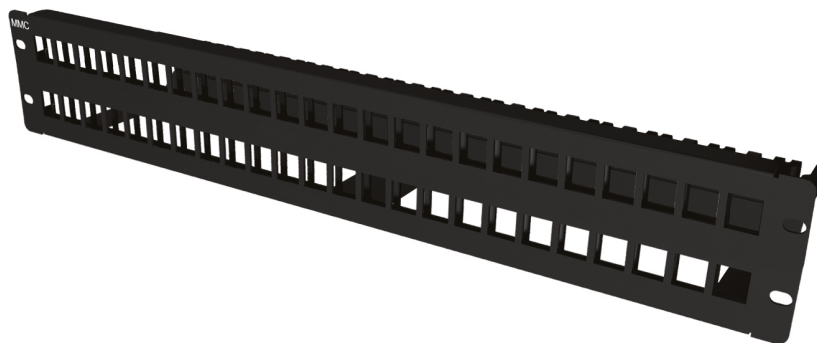
DESCRIPTION

1U or 2U patch panel for RJ45 keystone jack. Panel equipped with a double skin to facilitate automatic grounding.

Cable management system enabling them to be mounted without clamps, and identification numbers on the front panel.

RAL7016 gray panel

Mounting using cage nuts supplied



ADVANTAGES

- Unique rear system management to fix the cable without cable tie
- Direct grounding
- Modularity : blank module for unused port
- Keystone format



Updated: 1/02/2026

This document is confidential and is the property of ADALTRA. ADALTRA holds the copyright, and the document must not be copied or modified in any form, in whole or in part, without the prior written permission of ADALTRA. The specifications contained in this document are non-contractual and may be subject to change without prior notice.

CONSTRUCTION & TECHNICAL PERFORMANCE

| | |
|------------------------|--------------------------------------|
| Product Type | BCPANxU |
| Color | Anthracite Grey RAL 7016 |
| Number of ports | 48 Ports |
| U Height | 2U |
| Connector Format | Style Keystone |
| Inch Format | 19" |
| Dimensions (W x D x h) | 88.9 x 482.6 x 165 mm |
| Grounding | Automatique ou par câblette de terre |

ADDITIONAL INFORMATION

| | |
|-------------------|--------|
| Product Packaging | Carton |
| Weight (Kg) | 1.416 |