

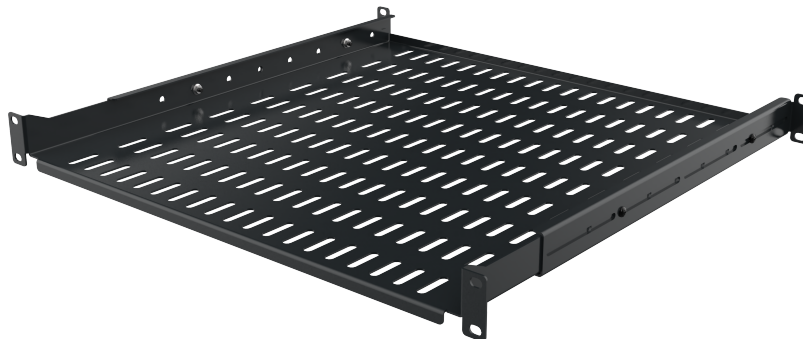
BPF1U450AD2

Depth-adjustable 19" fixed tray - 450
mm - 1U



DESCRIPTION

This 19" fixed tray is depth-adjustable and is mounted on front and rear uprights. It is made from 15/10 thick steel plate with RAL 7016 epoxy paint. Its load capacity is 35kg.



ADVANTAGES

- 19" accessories for holding active devices, servers, laptops, etc.
- Different depths are available to guarantee compatibility with all our floor-standing cabinets



Updated: 1/02/2026

This document is confidential and is the property of ADALTRA. ADALTRA holds the copyright, and the document must not be copied or modified in any form, in whole or in part, without the prior written permission of ADALTRA. The specifications contained in this document are non-contractual and may be subject to change without prior notice.

CONSTRUCTION & TECHNICAL PERFORMANCE

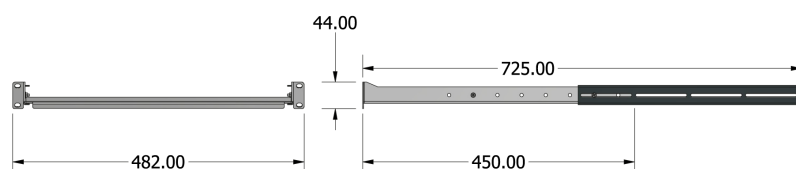
Product Type	BPFxUyyyAD2
Color	Grey RAL 7016
U Height	1U
Load Capacity	35 kg
Inch Format	19"
Dimensions (W x D x h)	44 x 482 x (450-725)
Material Type	Steel
Gross Scanned Weight of the US (g/km)	2,59

ADDITIONAL INFORMATION

Product Diagram	BPF1U450AD2_MAX_MIN
Product Packaging	cardboard of 1
Weight (Kg)	2.29

Additional Information

Dimensions maximum



Dimensions minimum

