

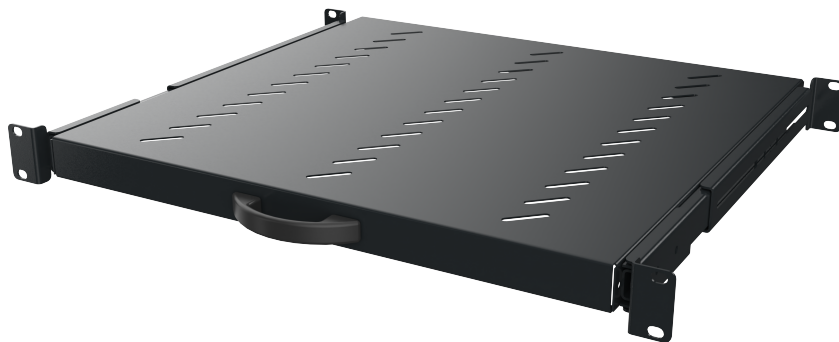
BPG1U350AD2

1U 350 mm deep 19" sliding tray



DESCRIPTION

This 350 mm ventilated sliding tray for 1U 600 mm deep cabinets. It is mounted on the front and rear uprights. This tray is made from 12/10 thick steel plate, It is covered with RAL7016 epoxy paint. This tray's load capacity is 30 kg.



ADVANTAGES

- 19" accessories for holding active devices, servers, laptops, etc.
- Different depths are available to guarantee compatibility with all our floor-standing cabinets
- Sliding trays



Updated: 1/02/2026

This document is confidential and is the property of ADALTRA. ADALTRA holds the copyright, and the document must not be copied or modified in any form, in whole or in part, without the prior written permission of ADALTRA. The specifications contained in this document are non-contractual and may be subject to change without prior notice.

CONSTRUCTION & TECHNICAL PERFORMANCE

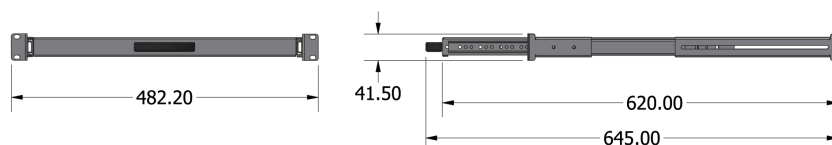
Product Type	BPG1UxxxAD2
Color	Anthracite Grey RAL 7016
U Height	1U
Load Capacity	30 kg
Inch Format	19"
Dimensions (W x D x h)	41.5 x 482.2 x (426-620)
Material Type	Galvanised steel
Gross Scanned Weight of the US (g/km)	3.15

ADDITIONAL INFORMATION

Product Diagram	BPG1U350AD2_MAX_MIN
Product Packaging	cardboard of 1
Weight (Kg)	2.85

Additional Information

Dimensions maximum



Dimensions minimum

