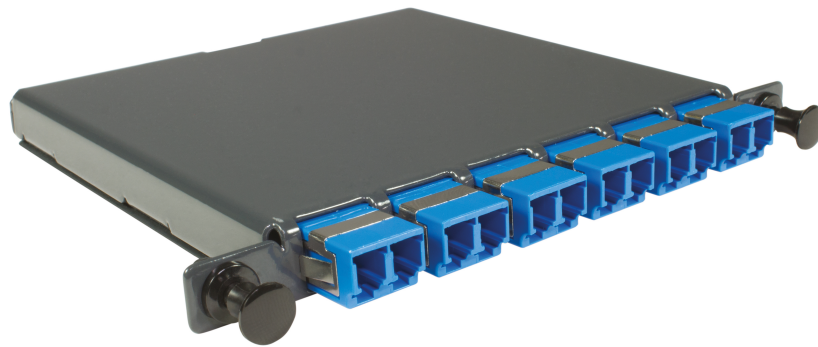


CAMTP06ALCDOM5

MTP cabled tray with 6 LC duplex OM5 adapters for CH1U fiber optic drawers

DESCRIPTION

6 or 12 LCD plug & play MTP tray for CH1U fiber optic drawers



ADVANTAGES

- Rapid installation
- LGX standard
- Plug and play solution



Updated: 1/02/2026

This document is confidential and is the property of ADALTRA. ADALTRA holds the copyright, and the document must not be copied or modified in any form, in whole or in part, without the prior written permission of ADALTRA. The specifications contained in this document are non-contractual and may be subject to change without prior notice.

CONSTRUCTION & TECHNICAL PERFORMANCE

Product Type	CAMTPxxALCDyyy
Color	Anthracite Grey RAL 7016
Compatible optical connector	LC Duplex
Number of Optical Fibers	6
Number of Accepted Fibers	12
Optical Connector Type	LC Duplex
Dimensions (W x D x h)	25.1 x 100 x 65 mm
Containing Material	Tôle d' acier 15/10
Maximum Capacity Modularity	Fixation plug and play par bouton poussoir
Gross Scanned Weight of the US (g/km)	0.28

ELECTRICAL CHARACTERISTICS

Optical Performance	OM5
---------------------	-----

TRANSMISSION CHARACTERISTICS

Data Transmission Standard	EN 50173, ISO 11801 ED3, IEEE 802.3ae, TIA 568-C3
----------------------------	---

MECHANICAL CHARACTERISTICS

Installation type	Interior
-------------------	----------

ENVIRONMENTAL CHARACTERISTIC

IP rating	IP20
RoHS Compliance	Conforme RoHS
Standards	ISO 11801 ED2.2, EIA/TIA 568-C.3
Component Standard	IEC 61754-20, IEC 61754-7, TIA/568 EIA 604-5, TIA/EIA 455-21a

ADDITIONAL INFORMATION

Product Packaging	Unit
Weight (Kg)	0.28