

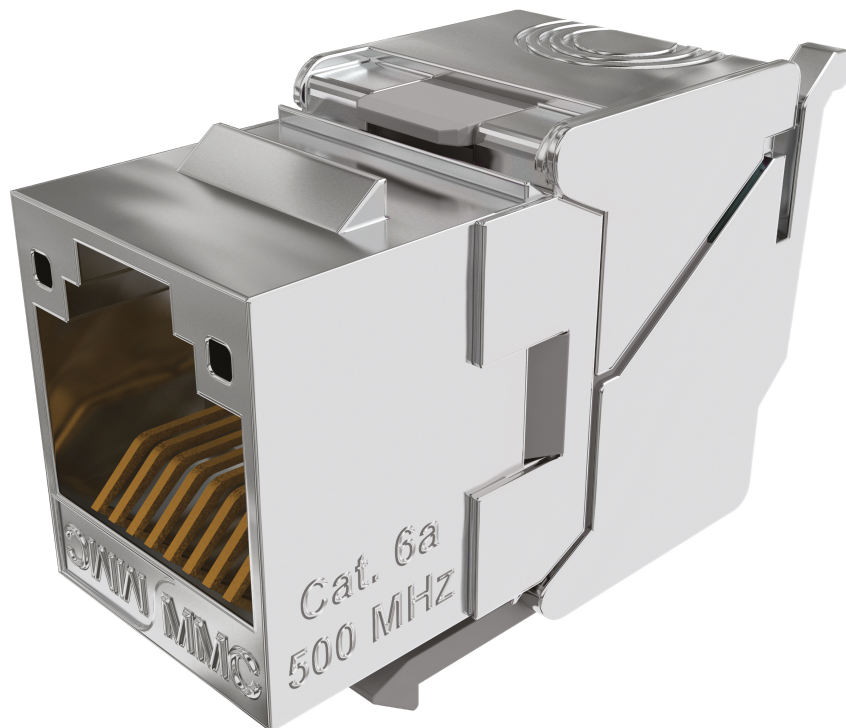
LK6AFSTL8

Cat6A toolless shielded RJ45 connector
- Link+ range - Bag of 8



DESCRIPTION

The LK6AFSTL is a shielded CAT6A RJ45 connector, compact (28.25 mm), with tool-less termination via a wiring comb. ISO 11801 PL2 Class Ea certified, it supports 10 Gbit/s transmissions with a low error rate. Its optimized printed circuit board improves high-frequency NEXT values. Keystone type.



ADVANTAGES

- Class Ea certified connector
- 15 year warranty
- Keystone format



CONSTRUCTION & TECHNICAL PERFORMANCE

Product Type	LK6AFSTLxy
Color	Metal
Connector Format	Style Keystone
Core Material	Zamak shielded body
Dimensions (W x D x h)	21,91 x 16 x 28,25 mm
Shielding	Full Shielded
Coding Type	Colour code 568 B
Max Compatible Conductor Diameter (mm)	130
Inserter Type	Wiring comb
Cover Material	Zamak
CAD Nature	Bronze + Platinum / Cu + SnPb 80μ
Contact Nature	Bronze + Platinum Ni and Au 1.2μm
Grounding	Yes
Compatible Cable Type	Rigid and flexible
Cable Entry Type	Axial
Compatible Gauge Type	AWG26 to AWG23
Max Compatible Cable Diameter (mm)	850

ELECTRICAL CHARACTERISTICS

Service Voltage (V)	> 1000 Vdc
Admissible power	< 30 W
Contact resistance	< 20 mΩ IEC 60512-2-1 Test 2a
Operating voltage	< 72 Vdc
PoE type	IEEE 802.3at (PoEP)
Electronic Compensation	Optimized PCB Circuit

TRANSMISSION CHARACTERISTICS

Performance Category	Category 6A
Data Transmission Standard	EIA/TIA 568-C.2 Cat6A, EN 50173-1: 2011 Classe Ea, ISO / IEC 11801 Ed2.2 Class Ea

MECHANICAL CHARACTERISTICS

Insertion Cycle	> 1000
Locking Type	Two back caps linked to the connector body providing simplified locking of the connector

ADDITIONAL INFORMATION

System Warranty	15 years
Product Packaging	Bag
Weight (Kg)	0.02