

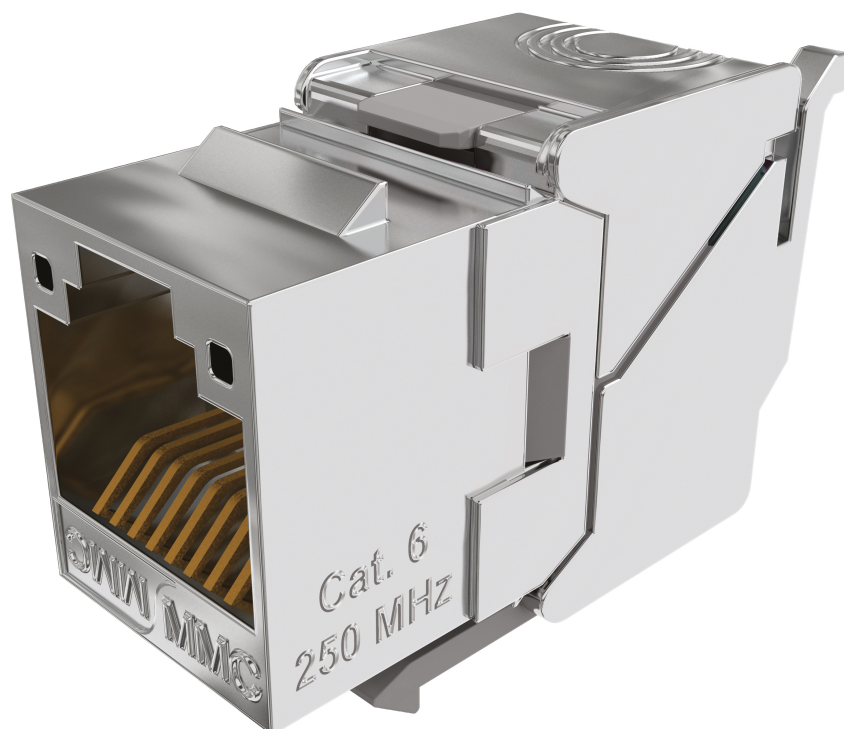
LK6FSTL8

Cat6 toolless shielded RJ45 connector -  
Link+ range - Bag of 8



## DESCRIPTION

The LK6FSTL Category 6 360° shielded RJ45 connector has a toolless connection via a pin connector strip. The connector, which is link-certified from an independent laboratory, ensures transmission at 1Gbit/s while offering a low error rate. Its keystone format makes it compatible with all common boxes and faceplates while ensuring excellent management of the bend radius thanks to its shallow depth.



## ADVANTAGES

- 15 year warranty
- Keystone format



**CONSTRUCTION & TECHNICAL PERFORMANCE**

Product Type	LK6FSTLxy
Color	Metal
Connector Format	Keystone
Core Material	Zamak shielded body
Dimensions (W x D x h)	21,91 x 16 x 28,25 mm
Shielding	Full Shielded
Coding Type	Colour code 568 B
Max Compatible Conductor Diameter (mm)	130
Inserter Type	Wiring comb
Cover Material	Zamak
CAD Nature	Bronze + Platinum / Cu + SnPb 80μ
Contact Nature	Bronze + Platinum Ni and Au 1.2μm
Grounding	Yes
Compatible Cable Type	Rigid and flexible
Cable Entry Type	Axial
Compatible Gauge Type	AWG26 to AWG23
Max Compatible Cable Diameter (mm)	850

**ELECTRICAL CHARACTERISTICS**

Service Voltage (V)	> 1000 Vdc contact à contact
Admissible power	? 30 W
Contact resistance	< 20 mΩ IEC 60512-2-1 Test 2a
Operating voltage	< 72 Vdc
PoE type	IEC 802.3at (PoEP)
Electronic Compensation	Optimized PCB circuit

**TRANSMISSION CHARACTERISTICS**

Performance Category	Category 6
Data Transmission Standard	EIA/TIA 568-C.2 Cat6, EN 50173-1: 2011 Classe E, ISO / IEC 11801 Ed2 Class E

**MECHANICAL CHARACTERISTICS**

Insertion Cycle	> 1000
Locking Type	Two back caps linked to the connector body providing simplified locking of the connector

**ADDITIONAL INFORMATION**

System Warranty	15 years
Product Packaging	Bag
Weight (Kg)	0.02