

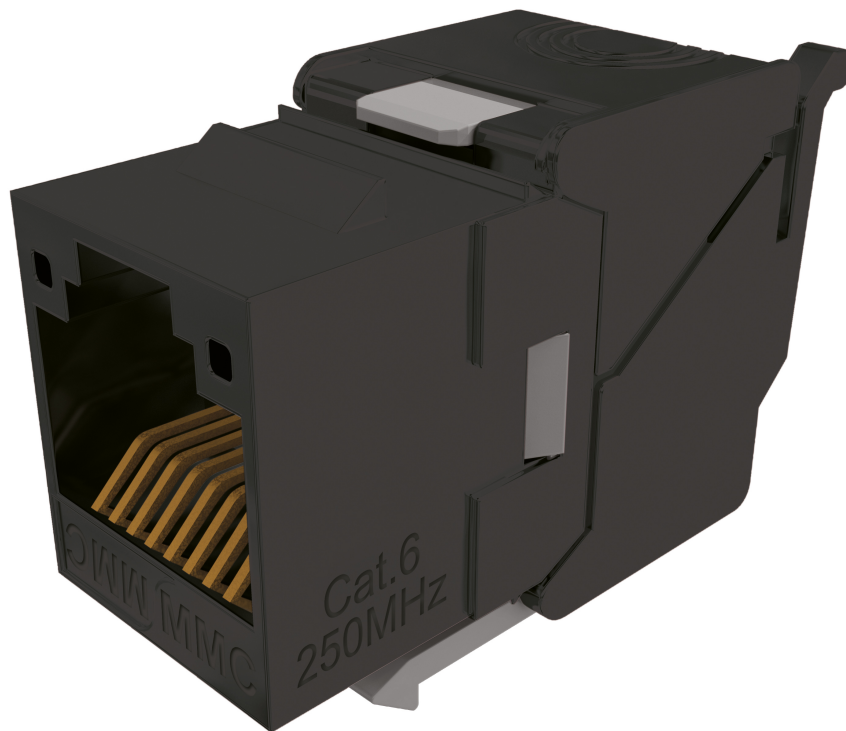
LK6NBTL8

Cat6 toolless unshielded RJ45 connector
 - Link+ range - Bag of 8



DESCRIPTION

The LK6NBTL Category 6 360° unshielded RJ45 connector has a toolless connection via a pin connector strip. The connector, which is link-certified from an independent laboratory, ensures transmission at 1Gbit/s while offering a low error rate. Its keystone format makes it compatible with all common boxes and faceplates while ensuring excellent management of the bend radius thanks to its shallow depth.



ADVANTAGES

- Class E certified connector
- 15 year warranty
- Keystone format



CONSTRUCTION & TECHNICAL PERFORMANCE

Product Type	LK6NBTLxy
Color	Black
Connector Format	Keystone
Core Material	Corps ABS
Dimensions (W x D x h)	21,91 x 16 x 28,25 mm
Shielding	Unshielded
Coding Type	Colour code 568 B
Max Compatible Conductor Diameter (mm)	120
Inserter Type	Peigne de câblage
Cover Material	PC UL94V0
CAD Nature	Bronze + Platine / Cu + SnPb 80µ
Contact Nature	Bronze + Platine Ni and Au 1.2µm
Grounding	Non
Compatible Cable Type	Rigide et souple
Cable Entry Type	axiale
Compatible Gauge Type	AWG26 à AWG23
Max Compatible Cable Diameter (mm)	850

ELECTRICAL CHARACTERISTICS

Service Voltage (V)	> 1000 Vdc contact à contact
Admissible power	? 30 W
Contact resistance	< 20 m? IEC 60512-2-1 Test 2a
Operating voltage	< 72 Vdc
PoE type	IEC 802.3at (PoEP)
Electronic Compensation	Circuit PCB optimisé

TRANSMISSION CHARACTERISTICS

Performance Category	Category 6
Data Transmission Standard	EIA/TIA 568-C.2 Cat6, EN 50173-1: 2011 Classe E, ISO / IEC 11801 Ed2 Class E

MECHANICAL CHARACTERISTICS

Insertion Cycle	> 1000
Locking Type	Deux Ailettes rattachées au corps du connecteur offrant un verrouillage simplifié du connecteur

ENVIRONMENTAL CHARACTERISTIC

Independent lab certification	Yes
IP rating	IP20
RoHS Compliance	Conforme RoHS
Operating Temperature	-40°C +70°C
Component Standard	IEC 60603-7-4

ADDITIONAL INFORMATION

System Warranty	15 years
Product Packaging	Bag
Weight (Kg)	0.01