

LOCKRJ45R

RJ45 PORT lockable system - Unit



## DESCRIPTION

Locking system for RJ45 port

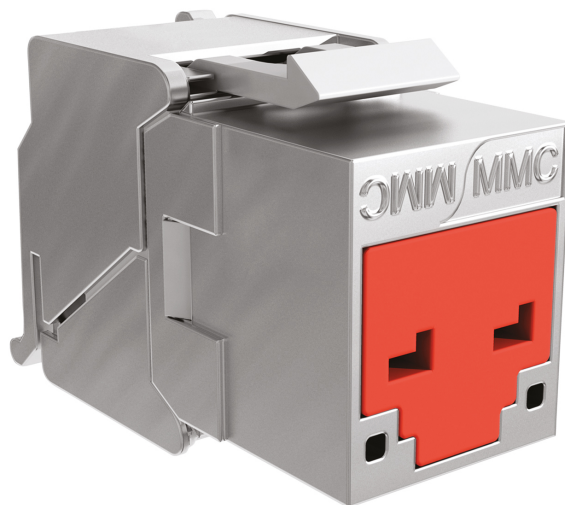
Enables faceplates, patch panels or all active devices, such as switches, etc. to be locked

Must be unlocked with a special key (supplied)

Security levels: each key unlocks the corresponding color system

Material: polycarbonate

Different colors available for easy identification (on request)



## ADVANTAGES

- Enables unused RJ45 ports to be locked in order to protect the network against intrusion
- Physical protection of active devices or patch panels or faceplates
- Can be unlocked with a key



Updated: 19/12/2025

This document is confidential and is the property of ADALTRA. ADALTRA holds the copyright, and the document must not be copied or modified in any form, in whole or in part, without the prior written permission of ADALTRA. The specifications contained in this document are non-contractual and may be subject to change without prior notice.

**CONSTRUCTION & TECHNICAL PERFORMANCE**

Product Type	LOCKRJ45x
Connector Format	RJ45

**ENVIRONMENTAL CHARACTERISTIC**

IP rating	n/a
RoHS Compliance	Conforme RoHS

**ADDITIONAL INFORMATION**

REF	LOCKRJ45R
SKU Collection Photo	lockrj45r_1_hd
Pictogram	verrouillable
Model Collection Photo	lockrj45r_1_hd
Product Range	Multimedia Connecct
Product Packaging	Bag