

MMCPLO6AFS

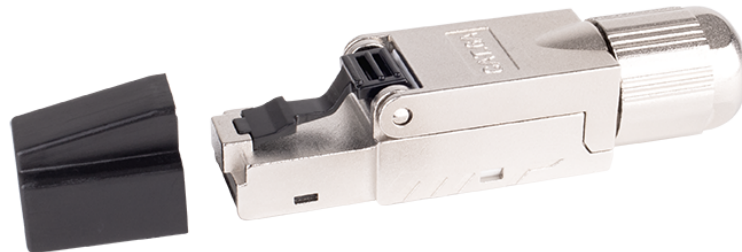
Field RJ45 connector CAT6A shielded  
360° - tool-free



## DESCRIPTION

The shielded RJ45 plug CAT6A MMCPLO6AFS is dedicated to the direct connection of IP equipment.

- Equipped with a rear clamping ring that ensures secure mechanical retention of the cable.
- Meets the requirements of Class Ea and the latest PoE standard.
- Tool-free assembly and termination.



## ADVANTAGES

- Tool-less Opening / Closing
- Class Ea Performance
- Suitable for AWG22 wire gauge cables



**CONSTRUCTION & TECHNICAL PERFORMANCE**

Color	Metal
Connector Format	Plug RJ45 Cat6A Sans Outil
Core Material	Zamak
Dimensions (W x D x h)	14,4 x 11,6 x 57 mm
Shielding	Full Shielded
Coding Type	Colour code 568 B
Min Compatible Cable Diameter (mm)	5,50
Max Compatible Conductor Diameter (mm)	1,50
Inserter Type	Wiring comb
Cover Material	Zamak
CAD Nature	Phosphor - Bronze
Contact Nature	Bronze, Nickel Platinum + Gold plating
Grounding	Yes
Compatible Cable Type	Rigid and flexible
Cable Entry Type	Axial
Compatible Gauge Type	AWG26 to AWG22
Cable Outlet Type	Axial
Max Compatible Cable Diameter (mm)	8,50

**ELECTRICAL CHARACTERISTICS**

Service Voltage (V)	125 Vac RMS
Admissible power	90 W
Contact resistance	? 100 m?
Operating voltage	< 72V DC
PoE type	4PPoE

**TRANSMISSION CHARACTERISTICS**

Performance Category	Category 6A
Data Transmission Standard	EIA/TIA 568-C.2 Cat6A, EN 50173-1: 2011 Classe Ea, ISO / IEC 11801 Ed2.2 Class Ea

**MECHANICAL CHARACTERISTICS**

Insertion Cycle	> 750
Locking Type	By clamping ring

**ENVIRONMENTAL CHARACTERISTIC**

IP rating	IP20
-----------	------

**ENVIRONMENTAL CHARACTERISTIC**

RoHS Compliance	RoHS compliant
Operating Temperature	0°C à +70°C
Component Standard	IEC 60603-7-51

**ADDITIONAL INFORMATION**

System Warranty	Nothing
Product Packaging	Bag
Weight (Kg)	0.024