

PANISDN60N

1U 60 port 19" telephone panel -  
4-5/3-6 - Unit

## DESCRIPTION

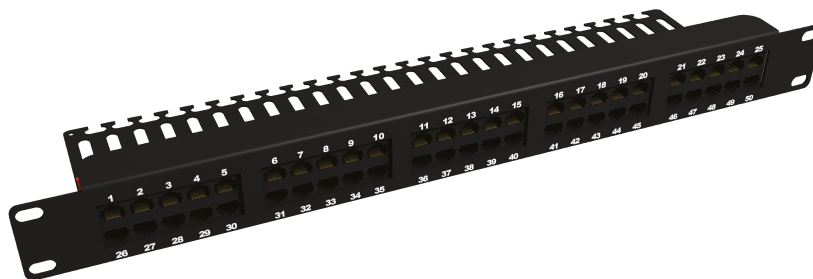
1U ISDN telephone panel equipped with 60 Cat3 UTP RJ45 ports

Black epoxy paint.

Depth: 100 mm, can be used in all 19" wall-mounted and floor-standing cabinets  
pre-wired pairs 4/5 and 3/6.

Horizontal printed circuits: DUAL IDC connectors: AWG23 - AWG26.

Grounding by pin.



## ADVANTAGES

- Loaded voice panel
- ISDN telephone panel equipped with 50 or 60 UTP CAT3 ports
- PANISDNxxN : 4/5 and 3/6 pairs with punch down termination
- FIXMULTI60PABX :
  - 5 modules of 12 ports 4/5 and 7/8 pairs with tooless termination
  - Equipped with rings on the back for a better management of cable



Updated: 1/02/2026

This document is confidential and is the property of ADALTRA. ADALTRA holds the copyright, and the document must not be copied or modified in any form, in whole or in part, without the prior written permission of ADALTRA. The specifications contained in this document are non-contractual and may be subject to change without prior notice.

**CONSTRUCTION & TECHNICAL PERFORMANCE**

Product Type	PANISDNxxN
Color	Black
Number of ports	60 Ports
U Height	1U
Connector Format	RJ45
Inch Format	19"
Dimensions (W x D x h)	44.4 x 482.6 x 170 mm
Grounding	Câblette de mise à la terre

**ELECTRICAL CHARACTERISTICS**

Service Voltage (V)	> 1000V DC contact to contact
---------------------	-------------------------------

**ADDITIONAL INFORMATION**

Product Packaging	Carton
Weight (Kg)	1.6