

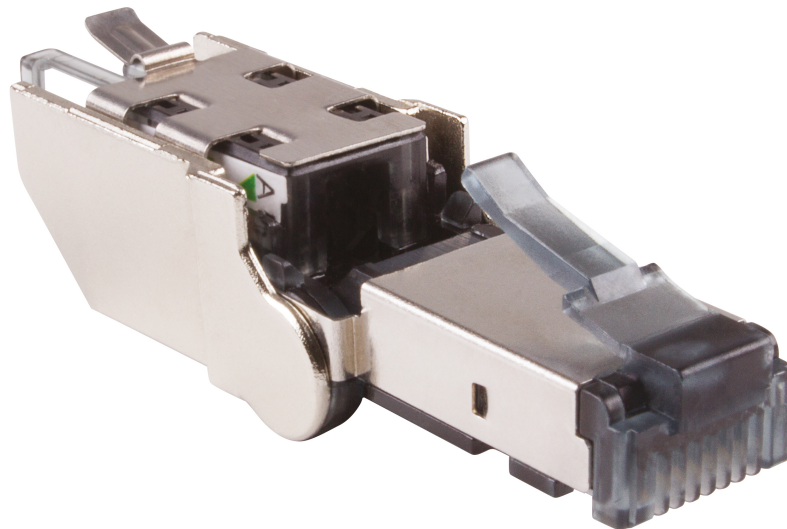
PLAG6AFS

CAT6A 360° shielded angled RJ45 plug  
with toolless connection



## DESCRIPTION

RJ45 plug, 360° shielded, equipped with a 135° rotating head providing a very small bend radius. It enables the direct connection of IP solutions in confined spaces.



## ADVANTAGES

- 135° rotary head
- Tool-less connection
- Class Ea performance



**CONSTRUCTION & TECHNICAL PERFORMANCE**

Color	Metal
Connector Format	Plug RJ45 Cat6A Sans Outil
Core Material	Zamak shielded body
Dimensions (W x D x h)	12 x 15,2 x 50,5 mm
Shielding	Full Shielded
Coding Type	Colour code 568 A et B
Min Compatible Cable Diameter (mm)	5
Max Compatible Conductor Diameter (mm)	1,27
Inserter Type	Wiring comb
Cover Material	Zamak
CAD Nature	Nickel-plated phosphor bronze
Contact Nature	Gold plating on nickel underlayer
Grounding	Yes
Compatible Cable Type	Rigid
Cable Entry Type	Axial
Compatible Gauge Type	AWG26 to AWG23
Max Compatible Cable Diameter (mm)	8

**ELECTRICAL CHARACTERISTICS**

Admissible power	? 30W
Contact resistance	< 20 m? IEC 60512-2-1 Test 2a
Operating voltage	< 72 Vdc
PoE type	IEC 802.3at (PoEP)
Service Voltage (V)	> 1000 Vdc contact à contact

**TRANSMISSION CHARACTERISTICS**

Performance Category	Category 6A
Data Transmission Standard	EIA/TIA 568-C.2 Cat6A, EN 50173-1: 2011 Classe Ea, ISO / IEC 11801 Ed2.2 Class Ea

**MECHANICAL CHARACTERISTICS**

Insertion Cycle	Insertion cycle > 500 / Rotation cycle < 50
-----------------	---

**ENVIRONMENTAL CHARACTERISTIC**

RoHS Compliance	RoHS compliant
Operating Temperature	-40°C +70°C

**ADDITIONAL INFORMATION**

REF	PLAG6AFS
SKU Collection Photo	plag6afs_hd
Pictogram	cat6a
System Warranty	Nothing
Model Collection Photo	plag6afs_hd
Product Packaging	Bag
Additional Photo Dimension 1	PLAG6AFS

## Additional Information

