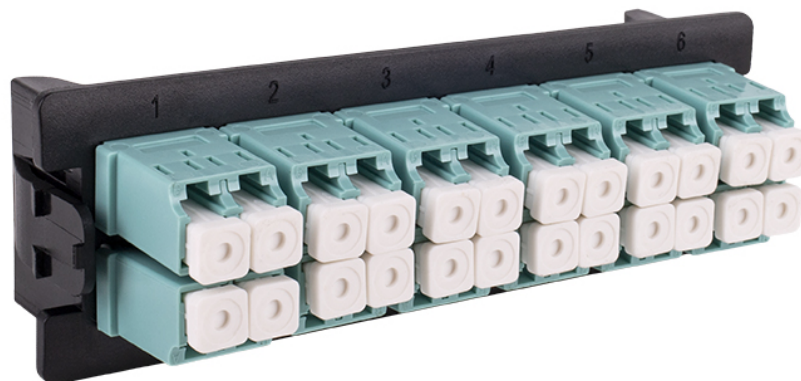


UHDFE12ALCDOM3

Front panel for 3U 19" UHD Panel  
drawer - 12 LCD OM3

## DESCRIPTION

They are installed using simple clips and offer a range of combinations for the same drawer



## ADVANTAGES

- Modularity: several possible combinations for the same drawer in SCD and/or LCD and/or MTP
- Easy to install: clips onto the drawers



**CONSTRUCTION & TECHNICAL PERFORMANCE**

Product Type	UHDFExxAyyyyzzz
Color	Deep Black RAL 9005
Number of Optical Fibers	12
Optical Connector Type	LC Duplex
Dimensions (W x D x h)	33 x 101 x 34 mm
Containing Material	ABS-PC
Maximum Capacity Modularity	Fixation par clip
Gross Scanned Weight of the US (g/km)	0,048

**ELECTRICAL CHARACTERISTICS**

Optical Performance	OM3
---------------------	-----

**ENVIRONMENTAL CHARACTERISTIC**

RoHS Compliance	Conforme RoHS
Standards	- EN 50173 - ISO 11801 Ed3 - TIA 568-C.3 - IEC 61754-20 - ROHS, REACH, SvHC
Component Standard	IEC 61754-20

**ADDITIONAL INFORMATION**

Product Packaging	Unit
Weight (Kg)	0.06