

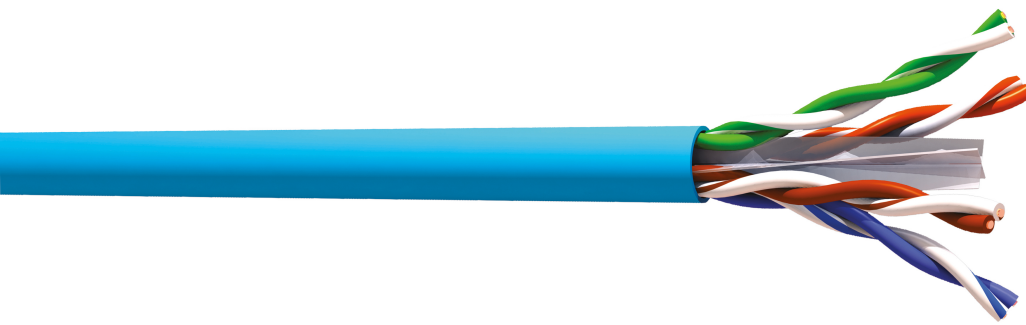
VG64SH1

**CAT6 U/UTP 1x4P 350 MHz LSZH Dca**  
Cable Coil of 100m



## DESCRIPTION

U/UTP 4 pairs cable, VG6xSH can be used in a horizontal or vertical configuration. It forms the basis for structured cabling and can support any type of IP application. Tested up to 350 MHz, VG6xSH provides operation above the requirement of the CAT6 standards. Used with a Multimedia Connect connection solution it will guarantee performances compliant with Channel Class E/CAT6. This cable is classified Dca s2,d2,a2 in accordance with standard CPR EN50575.



## ADVANTAGES

- Exceeds standard specifications : tested up to 350 MHz
- LSZH version available in Dca (CPR level)
- Electrical supply of equipments (camera, hotspot wifi, IP phone ...)



**CONSTRUCTION & TECHNICAL PERFORMANCE**

Product Type	VG6xSHyyyyyz
Core gauge	AWG23
Assembly type	Pairs
Outer Sheath Material	LSZH
Color	Blue RAL 5024
Nom. diameter of the outer sheath (mm)	6
Ground drain presence	No
Shielding type	U/UTP
Insulation Color Code	Blue and White blue or White - Orange and White orange or White - Green and White green or White - Brown and White brown or White
Nominal insulation diameter (mm)	0,92

**ELECTRICAL CHARACTERISTICS**

Loop resistance	170
Minimum insulation resistance	insulation_resistance_min_sup_5000
Service Voltage (V)	<250Vdc
Linear electrical resistance ( $\Omega$ /Km)	85
Mutual Capacity	< 45 pF
Capacity Imbalance	< 1600 pF/km

**TRANSMISSION CHARACTERISTICS**

Coupling attenuation (dB)	55
Delay skew	< 45
Unbalance resistance	< 2
Propagation speed (%)	69
Segregation Class	0
Performance Category	Category 6
Data Transmission Standard	EIA/TIA 568-C.2 Cat6, EN 50173-1: 2011 Classe E, ISO 11801 Ed.3 Classe E
Characteristic Impedance (Ohms)	100
Conductor/Shield Capacitance	1,6 nF/km
Conductor/Conductor Capacitance	45 nF/km

**MECHANICAL CHARACTERISTICS**

Bending Radius in Fixed Installation	8 x $\varnothing$ ext
--------------------------------------	-----------------------

**MECHANICAL CHARACTERISTICS**

Bending Radius in Mobile Installation	15 x Ø ext
---------------------------------------	------------

**ENVIRONMENTAL CHARACTERISTIC**

CPR classification	Dca s2, d2, a2
Fire behaviour	IEC 60332-1
Smoke emission	IEC 61034-1 & -2
Gas emission	IEC60754-2
RoHS Compliance	Compliant with the RoHS directive
Component Standard	IEC 61156-5 Cat6

**ADDITIONAL INFORMATION**

Product Packaging	Coil of 100m
Weight (Kg)	0.035

## TRANSMISSION PERFORMANCE

FREQUENCY (Mhz)	INSERTION LOSS (dB/100M)		NEXT (dB/100M)		PSNEXT (dB/100M)		ACR-F (dB/100M)		PSACR-F (dB/100M)		RETURN LOSS (dB/100M)	
	Standard	Typical Value	Standard	Typical Value	Standard	Typical Value	Standard	Typical Value	Standard	Typical Value	Standard	Typical Value
4	-3,8	-3,6	-66,3	-87,5	-63,3	-84,5	-56,0	-80,0	-53,0	-77,0	-23,0	-34,3
10	-6,0	-5,7	-60,3	-86,5	-57,3	-83,5	-48,0	-72,1	-45,0	-69,1	-25,0	-35,7
16	-7,6	-7,3	-57,2	-77,9	-54,2	-74,9	-43,9	-68,6	-40,9	-65,6	-25,0	-39,2
20	-9,6	-9,2	-54,3	-82,9	-51,3	-79,9	-40,0	-66,5	-37,0	-63,5	-24,3	-35,3
31,25	-10,7	-10,3	-52,9	-78,1	-49,9	-75,1	-38,1	-61,8	-35,1	-58,8	-23,6	-35,0
62,5	-15,5	-15,2	-50,9	-73,0	-47,9	-70,0	-32,1	-57,0	-29,1	-54,0	-21,5	-33,0
100	-19,9	-18,6	-48,4	-69,2	-45,4	-66,2	-28,0	-53,1	-25,0	-50,1	-20,1	-31,8
125	-22,5	-21,0	-45,3	-67,0	-42,3	-64,0	-26,1	-50,5	-23,1	-47,5	-19,4	-32,0
155	-25,3	-24,0	-42,4	-65,0	-39,4	-62,0	-24,2	-48,5	-21,2	-45,5	-18,8	-32,0
200	-29,1	-26,6	-40,8	-63,0	-37,8	-60,0	-22,0	-46,5	-19,0	-43,5	-18,0	-32,1
250	-33,0	-29,9	-39,3	-60,3	-36,3	-57,3	-20,0	-47,3	-17,0	-44,3	-17,3	-29,9
300	N/A	-32,0	N/A	-57,0	N/A	-54,0	N/A	-46,5	N/A	-43,5	N/A	-29,8
350	N/A	-35,0	N/A	-54,0	N/A	-51,0	N/A	-46,0	N/A	-43,0	N/A	-30,0