

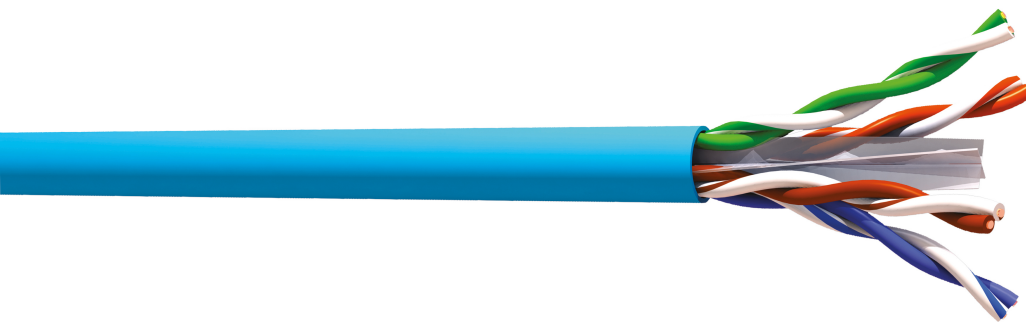
VG64SHC5

CAT6 U/UTP 1x4P 350 MHz LSZH Cca
Cable Drum of 500m



DESCRIPTION

The U/UTP 4-pair cable VG6xSHCy can be used in a horizontal or vertical configuration. It constitutes the basis of structured cabling and can support any type of IP application. Tested up to 350 MHz, the VG6xSHC ensures operation beyond CAT6 standards. Used with a Multimedia Connect connectivity solution, it will guarantee Channel Class E / CAT6-compliant performance. This cable is declared Cca s1,d1,a1 according to CPR EN50575.



ADVANTAGES

- Exceeds standard specifications : tested up to 350 MHz
- LSZH version available in Cca (CPR level)
- Electrical supply of equipments (camera, hotspot wifi, IP phone ...)



CONSTRUCTION & TECHNICAL PERFORMANCE

Product Type	VG6xSHCyyyyyz
Core gauge	AWG23
Core Composition	AWG23
Assembly type	Pairs
Outer Sheath Material	LSZH
Color	Blue RAL 5024
Minimum diameter of the outer sheath (mm)	5.8
Ø SHEATH NOM (mm)	6
Ground drain presence	No
Shielding type	U/UTP
Insulation Color Code	Blue and White blue or White - Orange and White orange or White - Green and White green or White - Brown and White brown or White
Minimum Insulation Diameter (mm)	0,87
Maximum Insulation Diameter (mm)	0,97
Diameter over Insulation	0,92

ELECTRICAL CHARACTERISTICS

Loop resistance	170
Minimum insulation resistance	> 5000 MΩ x km
Linear electrical resistance (Ω/Km)	85
Service Voltage (V)	<250Vdc
Mutual Capacity	< 45 pF
Capacity Imbalance	< 1600 pF/km

TRANSMISSION CHARACTERISTICS

Coupling attenuation (dB)	55
Transmission Performance	https://adaltra.cloud.akeneo.com/api/rest/v1/media-files/2/2/3/f/223fcc3b9a1339f1e82e57b207e7057583d9477_VG6xSHCyyyyyz_PERFORMANCE_EN.png/download
Delay skew	< 45
Unbalance resistance	< 2
Propagation speed (%)	69
Transmission Performance	https://adaltra.cloud.akeneo.com/api/rest/v1/media-files/2/2/3/f/223fcc3b9a1339f1e82e57b207e7057583d9477_VG6xSHCyyyyyz_PERFORMANCE_EN.png/download

Updated: 19/12/2025

This document is confidential and is the property of ADALTRA. ADALTRA holds the copyright, and the document must not be copied or modified in any form, in whole or in part, without the prior written permission of ADALTRA. The specifications contained in this document are non-contractual and may be subject to change without prior notice.

TRANSMISSION CHARACTERISTICS

Performance Category	Category 6
Data Transmission Standard	EIA/TIA 568-C.2 Cat6, EN 50173-1: 2011 Classe E, ISO 11801 Ed.3 Classe E
Characteristic Impedance (Ohms)	100
Conductor/Shield Capacitance	1,6 nF/km
Conductor/Conductor Capacitance	45 nF/km

MECHANICAL CHARACTERISTICS

Cable Copper Weight (kg/km)	0.0170
Bending Radius in Fixed Installation	8 x Ø ext
Bending Radius in Mobile Installation	15 x Ø ext

ENVIRONMENTAL CHARACTERISTIC

CPR classification	Cca s1, d1, a1
Fire Standard	IEC 60332-1
Smoke emission	IEC 61034-1 & -2
Gas emission	IEC60754-2
RoHS Compliance	Compliant with the RoHS directive
Component Standard	IEC 61156-5 Cat6

ADDITIONAL INFORMATION

Minimum Cut	0.0000
REF	VG64SHC5
Maximum E-commerce Drop	0.0000
SKU Collection Photo	vg64shx_hd
Cross-section Diagram Photo	VG64SH_COUPE_EN_HD
Model Cross-section Diagram Photo	VG64SH_COUPE_EN_HD
Pictogram	350_mhz
Model Collection Photo	vg64shx_hd
Product Range	Multimedia Connecct
Product Packaging	Drum of 500m

TRANSMISSION PERFORMANCE

FREQUENCY (Mhz)	INSERTION LOSS (dB/100M)		NEXT (dB/100M)		PSNEXT (dB/100M)		ACR-F (dB/100M)		PSACR-F (dB/100M)		RETURN LOSS (dB/100M)	
	Standard	Typical Value	Standard	Typical Value	Standard	Typical Value	Standard	Typical Value	Standard	Typical Value	Standard	Typical Value
4	-3,8	-3,6	-66,3	-87,5	-63,3	-84,5	-56,0	-80,0	-53,0	-77,0	-23,0	-34,3
10	-6,0	-5,7	-60,3	-86,5	-57,3	-83,5	-48,0	-72,1	-45,0	-69,1	-25,0	-35,7
16	-7,6	-7,3	-57,2	-77,9	-54,2	-74,9	-43,9	-68,6	-40,9	-65,6	-25,0	-39,2
20	-9,6	-9,2	-54,3	-82,9	-51,3	-79,9	-40,0	-66,5	-37,0	-63,5	-24,3	-35,3
31,25	-10,7	-10,3	-52,9	-78,1	-49,9	-75,1	-38,1	-61,8	-35,1	-58,8	-23,6	-35,0
62,5	-15,5	-15,2	-50,9	-73,0	-47,9	-70,0	-32,1	-57,0	-29,1	-54,0	-21,5	-33,0
100	-19,9	-18,6	-48,4	-69,2	-45,4	-66,2	-28,0	-53,1	-25,0	-50,1	-20,1	-31,8
125	-22,5	-21,0	-45,3	-67,0	-42,3	-64,0	-26,1	-50,5	-23,1	-47,5	-19,4	-32,0
155	-25,3	-24,0	-42,4	-65,0	-39,4	-62,0	-24,2	-48,5	-21,2	-45,5	-18,8	-32,0
200	-29,1	-26,6	-40,8	-63,0	-37,8	-60,0	-22,0	-46,5	-19,0	-43,5	-18,0	-32,1
250	-33,0	-29,9	-39,3	-60,3	-36,3	-57,3	-20,0	-47,3	-17,0	-44,3	-17,3	-29,9
300	N/A	-32,0	N/A	-57,0	N/A	-54,0	N/A	-46,5	N/A	-43,5	N/A	-29,8
350	N/A	-35,0	N/A	-54,0	N/A	-51,0	N/A	-46,0	N/A	-43,0	N/A	-30,0