

VGBP410SH

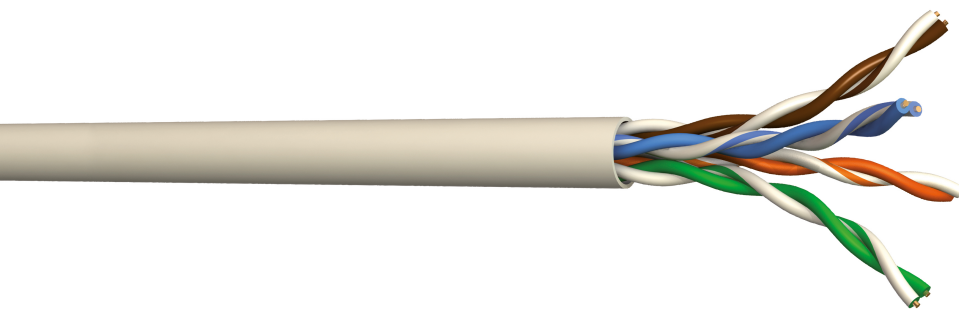
CAT5E U/UTP 1x4P LSZH PATCH CABLE
- DRUM OF 1000m



DESCRIPTION

Unshielded U/UTP cable, VGBPxSH, is used for production of patch cords or consolidation links. It forms the extension of a high-speed voice, data and video network and is an integral component of a class D linking chain.

This cable is used in digital and analog signal transmission for voice, data transmission and video links.



ADVANTAGES

- Supports IEEE802.3 / IEEE802.5 / IEEE802.12 applications
- Supports ATM 622 Mps applications



CONSTRUCTION & TECHNICAL PERFORMANCE

Product Type	VGBPxxyyySHz
Core gauge	AWG26/7
Assembly type	Pairs
Outer Sheath Material	LSZH
Color	Grey RAL 7035
Nom. diameter of the outer sheath (mm)	5.4
Ground drain presence	No
Shielding type	U/UTP
Insulation Color Code	Blue and White blue or White - Orange and White orange or White - Green and White green or White - Brown and White brown or White
Nominal insulation diameter (mm)	0,80

ELECTRICAL CHARACTERISTICS

Loop resistance	290
Minimum insulation resistance	> 5000 MΩ x km
Service Voltage (V)	<250Vdc
Linear electrical resistance (Ω/Km)	145
Mutual Capacity	< 45 pF
Capacity Imbalance	< 1600 pF/km

TRANSMISSION CHARACTERISTICS

Coupling attenuation (dB)	65
Delay skew	< 45
Unbalance resistance	< 2
Propagation speed (%)	66
Performance Category	Category 5E
Data Transmission Standard	EIA/TIA 568-C.2 Cat5E, EN 50173-1: 2011 Classe D, ISO / IEC 11801 Ed3 Class D
Characteristic Impedance (Ohms)	100
Conductor/Shield Capacitance	1,6 nF/km
Conductor/Conductor Capacitance	45 nF/km

MECHANICAL CHARACTERISTICS

Bending Radius in Fixed Installation	8 x Ø ext
Bending Radius in Mobile Installation	15 x Ø ext

Updated: 1/02/2026

This document is confidential and is the property of ADALTRA. ADALTRA holds the copyright, and the document must not be copied or modified in any form, in whole or in part, without the prior written permission of ADALTRA. The specifications contained in this document are non-contractual and may be subject to change without prior notice.

ENVIRONMENTAL CHARACTERISTIC

Fire behaviour	IEC 60332-1
Smoke emission	IEC 61034-1 & -2
Gas emission	IEC60754-2
RoHS Compliance	Conforme à la directive RoHS
Component Standard	IEC 61156-6 Cat5E

ADDITIONAL INFORMATION

Product Packaging	Drum of 1000m
Weight (Kg)	0.035